

KOBRA[®]

WASTEE

waste sorting modular system



www.wastee.it
MADE IN ITALY

WASTEE

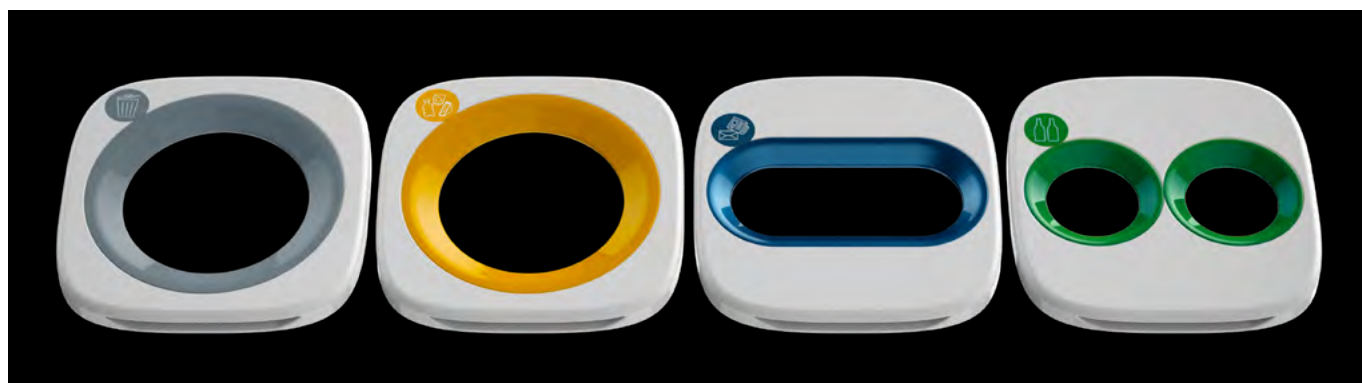
waste sorting modular system

www.wastee.it



KOBRA WASTEE
Waste Sorting Modular System
 designed by **CARLO COLOMBO ARCHITECT**

Carlo Colombo graduated in architecture from the Politecnico di Milano in 1993 and immediately started to dedicate himself to design and marketing of industrial products, graphics, and set-ups, collaborating with the best brands of Italian design such as Flexform, Poliform, Giorgetti, Cappellini, Antoni Lupi, Artemide, Flou, Bentley Home, Bugatti Home, Trussardi Casa, Elie Saab Maison, Olivari, Faber, Sahrai, Penta Light, to name a few. Since 2011 he has been teaching design at the University of Beijing. In 2013 he founded A++ architecture studio with Paolo Colombo in Lugano, which deals with interiors and large-scale projects all over the world, with studios in Lugano, Zurich, New York, Miami, and Dubai. His projects have been exhibited in Paris, at the Weserburg Museum of Modern Art in Bremen (1995), at the Museum of Decorative Arts in Cologne (1996), at the Milan Triennale (2016), and at MARCA, Museum of the Arts of Catanzaro (2017). **The KOBRA WASTEE project originates from the belief that technology and design must meet the challenge of sustainability, so that aesthetically beautiful and elegant products have to be ecological, as well as functional.**



Graphics and colors help to separate types of waste.

The elegant, minimalist and modern design of KOBRA WASTE allows its placement in any location: ideal to create ecological islands in the office, in contemporary commercial areas and public spaces.

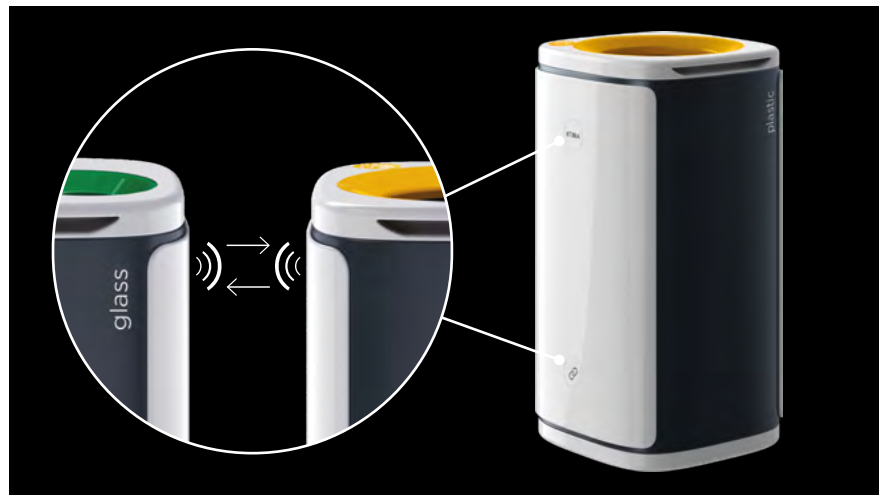
Perfect for properly disposing, recycling and organizing separate waste collection.



When technology and design meet sustainability:

- the clear and bright KOBRA WASTE bins have lids with colored profiles designed to make the recycling experience pleasant and enjoyable,
- more KOBRA WASTE bins combined together can be considered as furnishing elements, to be shown and not hidden, they stand out without invading the scene.

- **Available in different models**, graphics and colors which help to quickly identify how to separate the different types of waste according to international standards.
- **Space-saving modules, always well aligned:** two round areas located on each side include a magnet for easy joining of more bins to each other.
- **Stable container:** made of particular robust materials, 100% recyclable.
- **Easy to clean:** the lids and outer shell have an attractive glossy ivory-white finish.
- **Quick and easy system to change the full bag:** tilting opening of the lid.
- **Capacity:** 60 liters.
- **Waste bag made with recycled materials:** 100% recyclable.
- **Dimensions (LxDxH):** cm 34 x 34,5 x 70,5.
- **Weight:** 6,7 Kg.



Two round areas located on each side include a magnet for easy joining of more bins to each other.



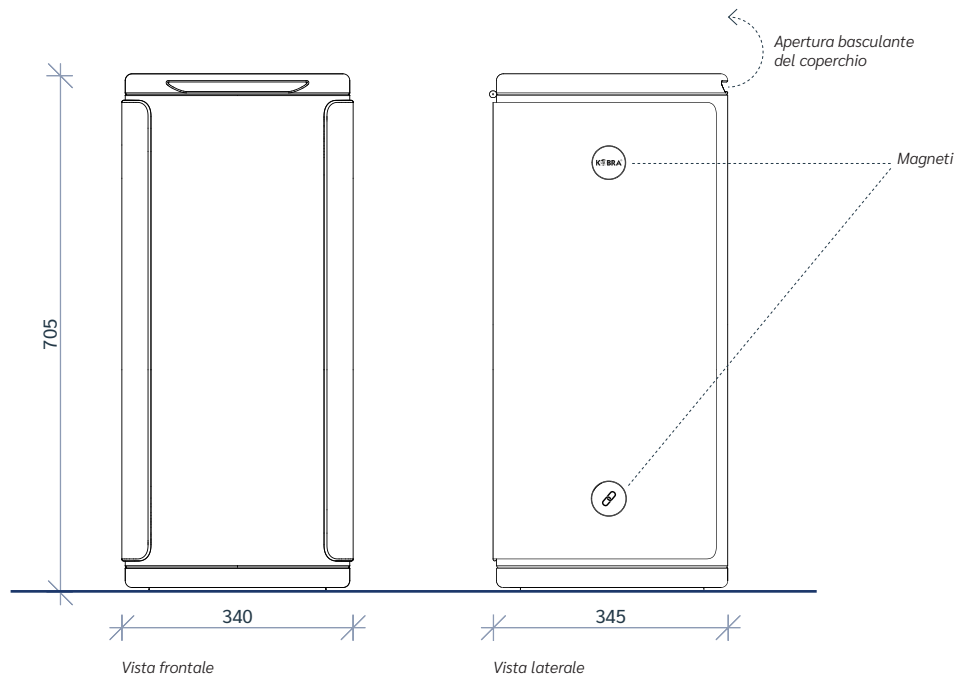
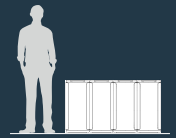
Quick and easy replacement of the bag.

Model	Article Code	Lid color / Hole type	Type of waste
Kobra Wastee Gray	WA-99.005	Gray / Round	Unsorted waste
Kobra Wastee Yellow	WA-99.006	Yellow / Round	Plastic
Kobra Wastee Blue	WA-99.007	Blue / Oval	Paper
Kobra Wastee Green	WA-99.008	Green / Two round	Glass

Available: waste bags made with recycled materials 100% recyclable (box of 100 bags), cod. art. WA-99.100,

WASTEE

waste sorting modular system



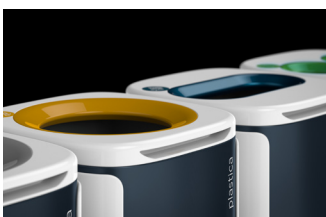
CARATTERISTICHE PRINCIPALI

KOBRA WASTEE Sistema modulare per la raccolta differenziata, *disegnato dall'Arch. Carlo Colombo*. Il design elegante, minimalista e moderno di KOBRA WASTEE permette la sua collocazione in ogni tipo di ambiente: ideale per creare isole ecologiche in ufficio, negli interni commerciali contemporanei e negli spazi pubblici. Indispensabili per smaltire e riciclare nel modo corretto e organizzare al meglio la raccolta differenziata.

- **Disponibili in diverse varianti**, la grafica e colori aiutano a separare le diverse tipologie di rifiuti secondo gli standard internazionali.
- **Moduli salva-spazio**, sempre ben allineati: due aree circolari, presenti ai lati della scocca esterna, contengono un magnete per agganciare facilmente i vari moduli per la raccolta differenziata.
- **Contenitori stabili**: costruiti con materiali particolarmente robusti 100% riciclabili.
- **Facili da pulire**: accattivante finitura bianco-avorio lucido dei coperchi e della scocca esterna.
- **Apertura basculante del coperchio**: veloce e facile sistema per lo svuotamento del sacco.
- **Capacità cestino**: 60 litri.
- **Sacchi raccolta ecologici**: 100% riciclabili.
- **Dimensioni (LxPxH)**: cm 34 x 34,5 x 70,5.
- **Peso**: 6,7 Kg.

	Kobra Wastee Grigio	Codice Art. WA-99.001	INDIFFERENZIATA Coperchio con foro rotondo
	Kobra Wastee Giallo	Codice Art. WA-99.002	AUTRES DECHETS Couvercle avec trou rond
	Kobra Wastee Blu	Codice Art. WA-99.003	PLASTICA Coperchio con foro rotondo
	Kobra Wastee Verde	Codice Art. WA-99.004	EMBALLAGES Couvercle avec trou rond
			CARTA Coperchio con foro ovale
			PAPIER Couvercle avec trou ovale
			VETRO Coperchio con due fori rotondi
			VERRE Couvercle avec deux trous ronds

Disponibile: scatola con sacchi raccolta ecologici, 100% riciclabili (confezione da 100).



I chiari e luminosi cestini KOBRA WASTEE hanno coperchi con profili colorati, per agevolare e rendere piacevole l'esperienza della raccolta differenziata.



Il modulo KOBRA WASTEE con quattro cestini si può considerare un elemento d'arredo, da mostrare e non da nascondere, si fa notare senza invadere la scena.